

**INSTRUMENT
APPROACH
CHART - ICAO**

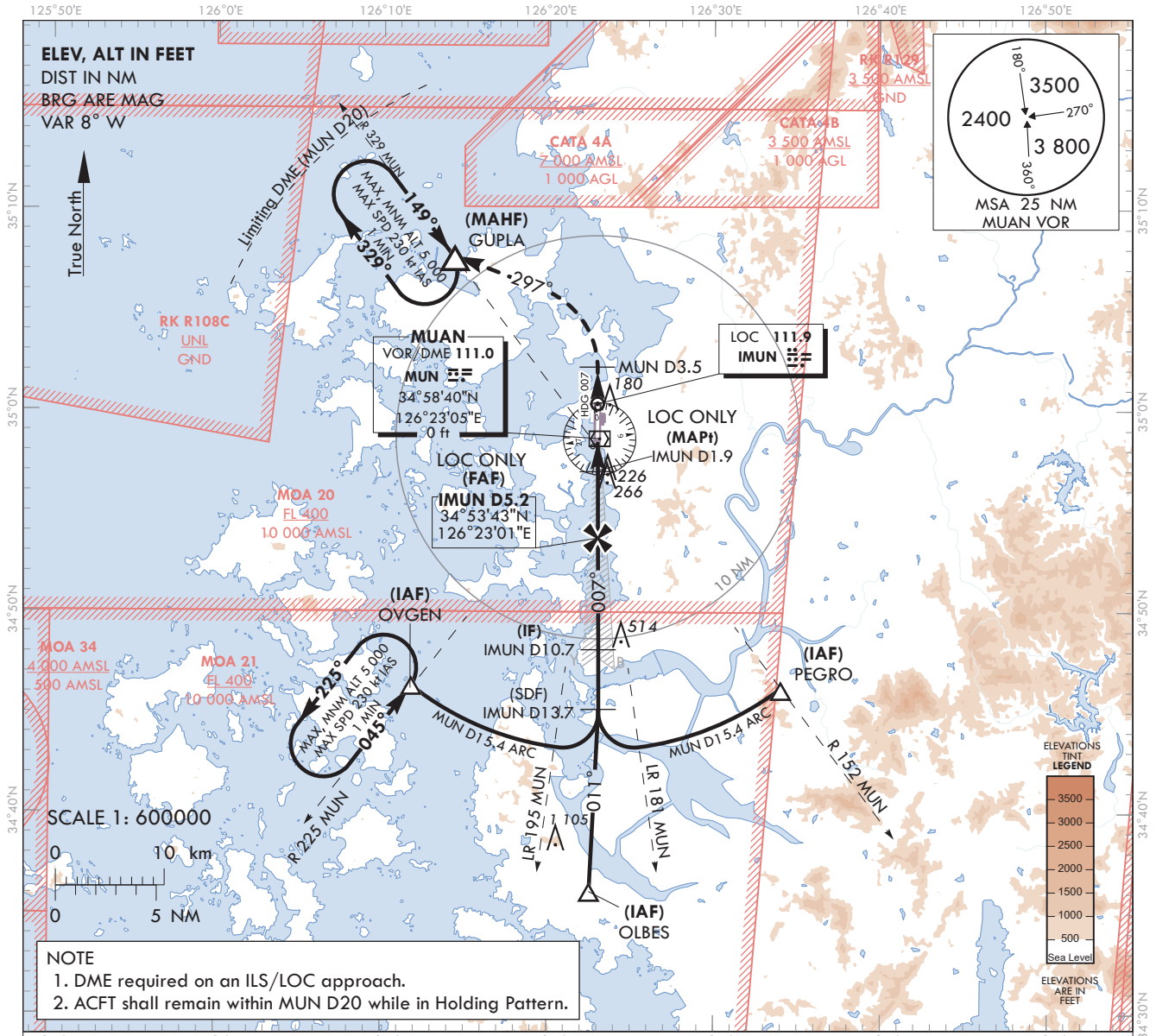
AERODROME ELEV 51 ft
HEIGHTS RELATED TO
THR RWY 01 - ELEV 32 ft

GWANGJU APP	120.475	130.0
	228.9	265.5
MUAN TWR	118.25	118.85

MUAN/Muan Intl(RKJB)

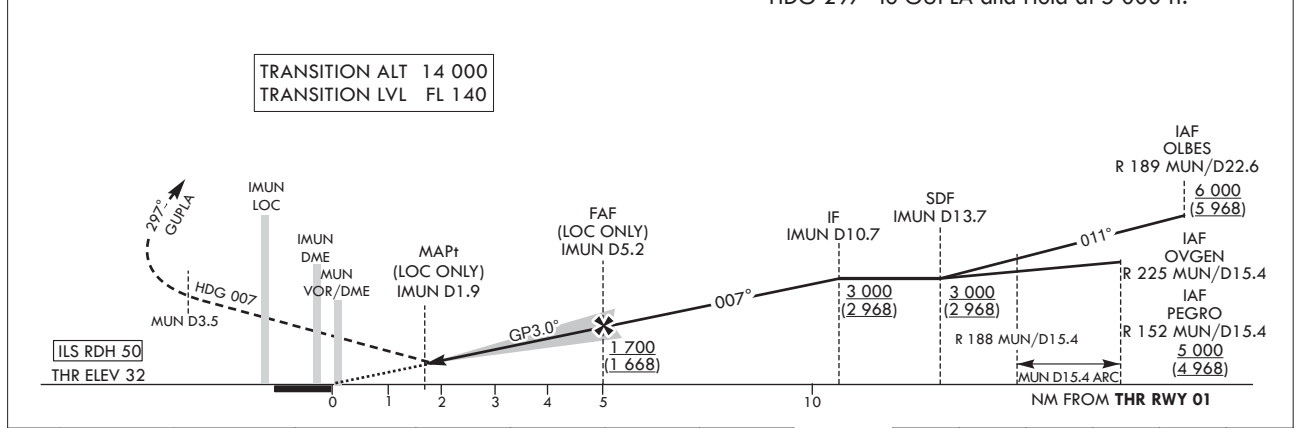
ILS Y or LOC Y RWY 01

Note : Approach under ICAO Flight Procedures.



RECOMMENDED PROFILE(LOC ONLY)	DME IMUN	5	4	3	2
Final Approach Gradient 5.31%, 323 ft/NM	ALT(HGT)	1 645 (1 613)	1 322 (1 290)	999 (967)	660 (628)

MISSED APPROACH
Climb on HDG 007° to MUN D3.5, then turn left HDG 297° to GUPLA and Hold at 5 000 ft.



CATEGORY	DA(DH)/MDA(MDH)	A	B	C	D	Knots	60	90	120	150	180	
							Rate of descent V/V fpm	318	478	637	796	955
STA	CAT-I	FULL	232	RVR 550 m, VIS 800 m				* Timing Not authorized for defining MAPt. * Circling Not authorized.				
		ALS INOP	(200)	1 200 m								
STA	LOC	FULL	660	2 600 m								
		ALS INOP	(628)	3 300 m								

Change : Amended phrase(procedure → procedures) and Withdrawal of unnecessary symbols.

MUAN/Muan Intl(RKJB)
ILS Y or LOC Y RWY 01

AERONAUTICAL DATA TABULATION

ILS Y or LOC Y Approach to RWY 01 from OVGEN, OLBES or PEGRO			
Fix/point		Coordinates	
OVGEN(IAF)	R 225 MUN /15.4 NM MUN	34°46'22.2"N	126°11'47.9"E
OLBES(IAF)	R 189 MUN /22.5 NM MUN	34°36'08.1"N	126°22'32.0"E
PEGRO(IAF)	R 152 MUN /15.4 NM MUN	34°46'09.0"N	126°34'02.1"E
D13.7 IMUN(SDF)	BRG 7.10°/13.7 NM IMUN	34°45'11.5"N	126°23'04.1"E
D10.7 IMUN(IF)	BRG 7.10°/10.7 NM IMUN	34°48'10.9"N	126°23'03.3"E
D5.2 IMUN(FAF LOC ONLY)	BRG 7.10°/5.2 NM IMUN	34°53'42.6"N	126°23'00.5"E
D1.9 IMUN(MAPt LOC ONLY)	BRG 7.10°/1.9 NM IMUN	34°56'59.1"N	126°22'59.2"E
MUN VOR/DME		34°58'40.0"N	126°23'05.4"E
THR RWY 01	Final approach descent angle 3.04° (LOC ONLY)	34°58'43.64"N	126°22'58.45"E
IMUN DME		34°58'53.2"N	126°22'53.8"E
IMUN LOC		35°00'23.1"N	126°22'57.8"E
D3.5 MUN	HDG 007		-
GUPLA	HDG 297/11.5 NM MUN	35°07'37.8"N	126°14'18.1"E

**INSTRUMENT
APPROACH
CHART - ICAO**

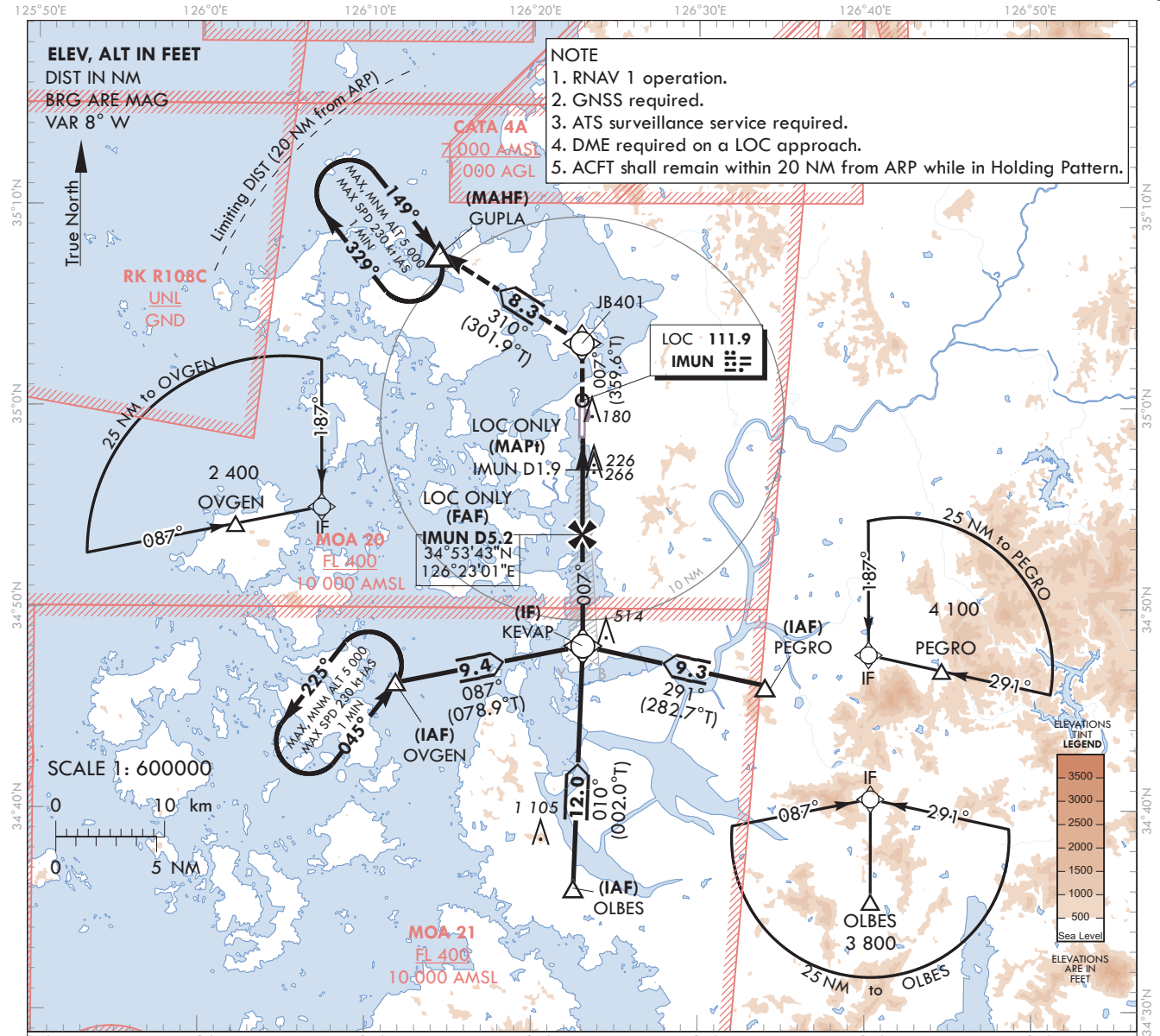
AERODROME ELEV 51 ft
HEIGHTS RELATED TO
THR RWY 01 - ELEV 32 ft

GWANGJU APP	120.475	130.0
	228.9	265.5
MUAN TWR	118.25	118.85

MUAN/Muan Intl(RKJB)

ILS Z or LOC Z RWY 01

Note : Approach under ICAO Flight Procedures.

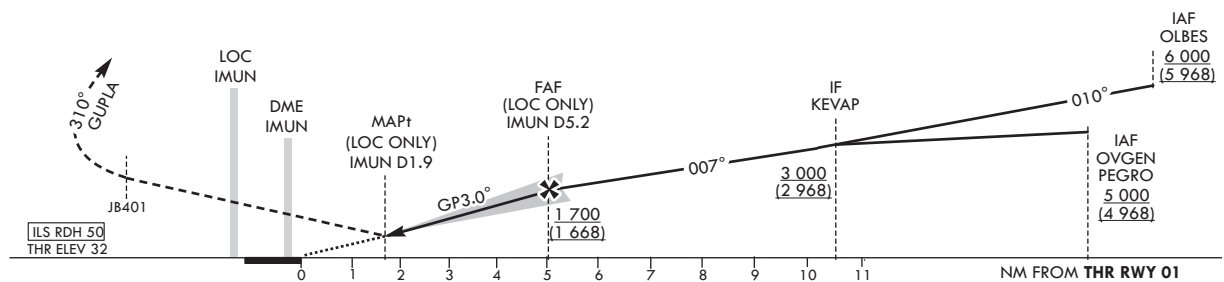


- NOTE**
1. RNAV 1 operation.
 2. GNSS required.
 3. ATS surveillance service required.
 4. DME required on a LOC approach.
 5. ACFT shall remain within 20 NM from ARP while in Holding Pattern.

RECOMMENDED PROFILE(LOC ONLY)	DME IMUN	5	4	3	2
Final Approach Gradient 5.31%, 323 ft/NM	ALT(HGT)	1 645 (1 613)	1 322 (1 290)	999 (967)	660 (628)

TRANSITION ALT 14 000
TRANSITION LVL FL 140

MISSED APPROACH
Climb to 5 000 ft on track of 007° to JB401, then LEFT turn on track of 310° to GUPLA. Hold as published.



CATEGORY	DA(DH)/MDA(MDH)	A	B	C	D	Knots							
						60	90	120	150	180			
STA	CAT-I	FULL	232	RVR 550 m, VIS 800 m			Rate of descent	V/V fpm	318	478	637	796	955
		ALS INOP	(200)	1 200 m									
STA	LOC	FULL	660	2 600 m									
		ALS INOP	(628)	3 300 m									

Change : Amended phrase(procedure → procedures).

MUAN/Muan Intl(RKJB)
ILS Z or LOC Z RWY 01

AERONAUTICAL DATA TABULATION

ILS Z or LOC Z Approach to RWY 01 from OVGEN, OLBES or PEGRO		
Fix/point		Coordinates
OVGEN(IAF)		34°46'22.2"N 126°11'47.9"E
OLBES(IAF)		34°36'08.1"N 126°22'32.0"E
PEGRO(IAF)		34°46'09.0"N 126°34'02.1"E
KEVAP(IF)	BRG 7.10°/10.69 NM IMUN	34°48'10.9"N 126°23'03.3"E
D5.2 IMUN(FAF LOC ONLY)	BRG 7.10°/5.17 NM IMUN	34°53'42.6"N 126°23'00.5"E
D1.9 IMUN(MAPt LOC ONLY)	BRG 7.10°/1.90 NM IMUN	34°56'59.1"N 126°22'59.2"E
THR RWY 01	Final approach descent angle 3.04°(LOC ONLY)	34°58'43.64"N 126°22'58.45"E
IMUN DME		34°58'53.2"N 126°22'53.8"E
IMUN LOC		35°00'23.1"N 126°22'57.8"E
JB401		35°03'13.1"N 126°22'56.4"E
GUPLA		35°07'37.8"N 126°14'18.1"E

**INSTRUMENT
APPROACH
CHART - ICAO**

AERODROME ELEV 51 ft
HEIGHTS RELATED TO
THR RWY 01 - ELEV 32 ft

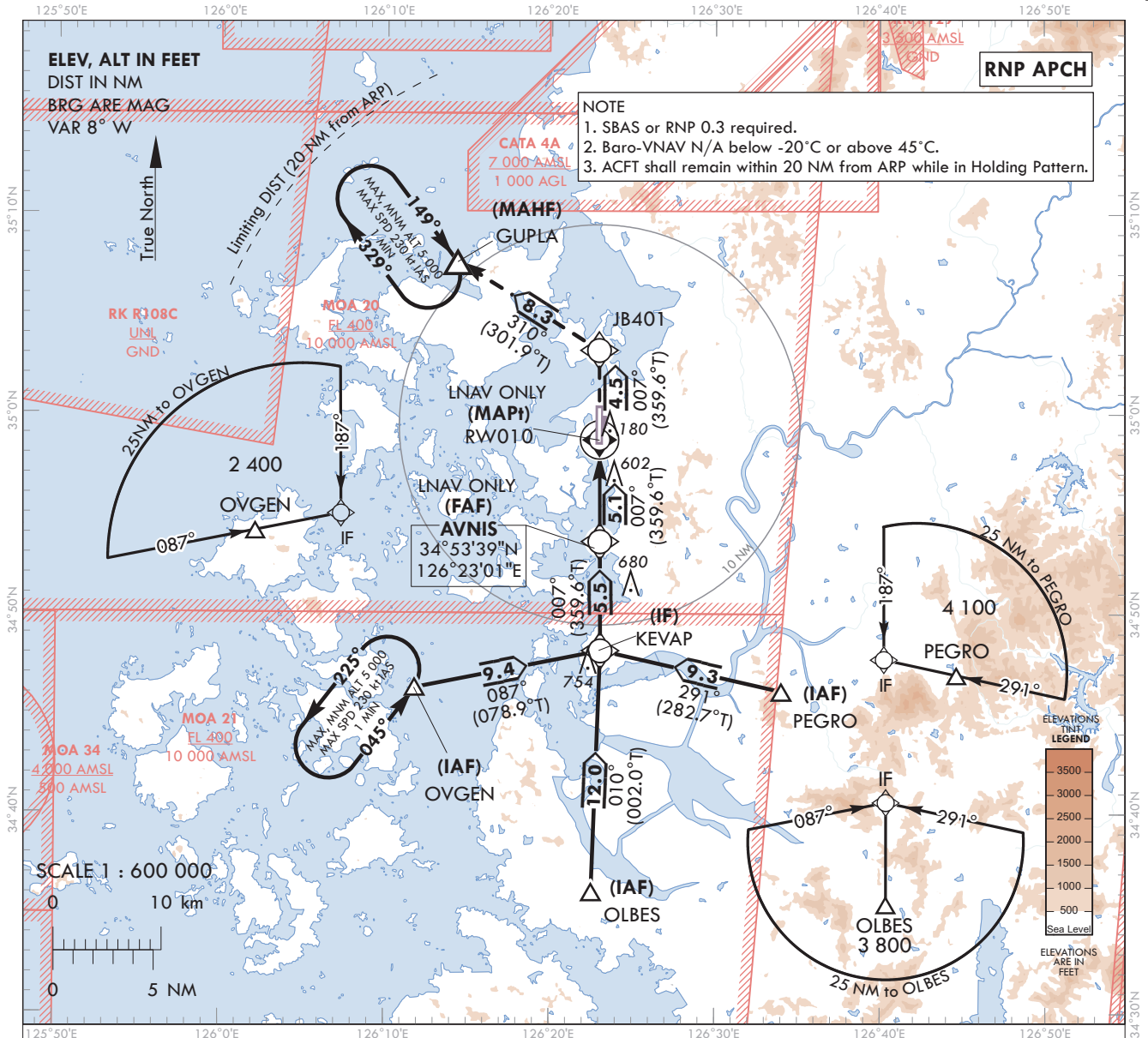
GWANGJU APP	120.475	130.0
	228.9	265.5
MUAN TWR	118.25	118.85

KASS
CH86099
K01A
RDH : 50

MUAN/Muan Intl(RKJB)

RNP RWY 01

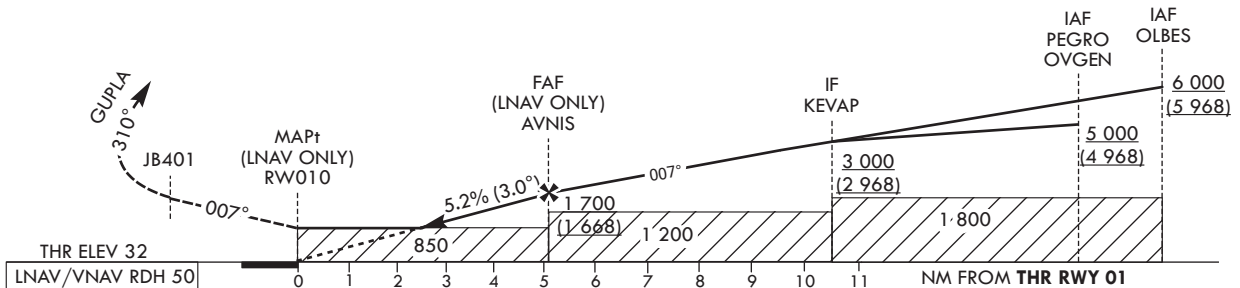
Note : Approach under ICAO Flight Procedures.



TRANSITION ALT 14 000
TRANSITION LVL FL 140

MISSED APPROACH

Climb to 5 000 ft on track of 007° to JB401,
then LEFT turn on track of 310° to GUPLA.
Hold as published.



CATEGORY	DA(H)/MDA(H)	A	B	C	D	Rate of descent					
						Knots	60	90	120	150	180
STA	LPV	FULL	320	700 m							
		ALS INOP	(288)	1 400 m							
	LNAV/VNAV	FULL	790	2 700 m							
		ALS INOP	(758)	3 500 m							
LNAV	FULL	850	3 100 m								
	ALS INOP	(818)	3 800 m								

Change : Amended phrase(procedure → procedures).

MUAN/Muan Intl(RKJB)
RNP RWY 01
HOLDING PROCEDURE

AERONAUTICAL DATA TABULATION

Instrument Approach Procedure Coding Tables

RNP RWY 01 - via OVGEN to KEVAP(IF)

Serial Number	Path Descriptor	Waypoint Identifier	Fly-over	Course/Track °M(°T)	Distance (NM)	Turn direction	Altitude (ft)	Speed (kt)	Coordinates	VPA/RDH	Navigation specification	Remarks
001	IF	OVGEN	-	-	-	-	+5 000	-	34°46'22.2"N 126°11'47.9"E	-	RNP APCH	IAF
002	TF	KEVAP	-	087(078.9)	9.4	-	+3 000	-	34°48'10.9"N 126°23'03.3"E	-	RNP APCH	IF

RNP RWY 01 - via OLBES to KEVAP(IF)

Serial Number	Path Descriptor	Waypoint Identifier	Fly-over	Course/Track °M(°T)	Distance (NM)	Turn direction	Altitude (ft)	Speed (kt)	Coordinates	VPA/RDH	Navigation specification	Remarks
001	IF	OLBES	-	-	-	-	+6 000	-	34°36'08.1"N 126°22'32.0"E	-	RNP APCH	IAF
002	TF	KEVAP	-	010(002.0)	12.0	-	+3 000	-	34°48'10.9"N 126°23'03.3"E	-	RNP APCH	IF

RNP RWY 01 - via PEGRO to KEVAP(IF)

Serial Number	Path Descriptor	Waypoint Identifier	Fly-over	Course/Track °M(°T)	Distance (NM)	Turn direction	Altitude (ft)	Speed (kt)	Coordinates	VPA/RDH	Navigation specification	Remarks
001	IF	PEGRO	-	-	-	-	+5 000	-	34°46'09.0"N 126°34'02.1"E	-	RNP APCH	IAF
002	TF	KEVAP	-	291(282.7)	9.3	-	+3 000	-	34°48'10.9"N 126°23'03.3"E	-	RNP APCH	IF

RNP RWY 01 - via KEVAP(IF) to GUPLA(MAHF)

Serial Number	Path Descriptor	Waypoint Identifier	Fly-over	Course/Track °M(°T)	Distance (NM)	Turn direction	Altitude (ft)	Speed (kt)	Coordinates	VPA/RDH	Navigation specification	Remarks
002	TF	KEVAP	-	-	-	-	+3 000	-	34°48'10.9"N 126°23'03.3"E	-	RNP APCH	IF
003	TF	AVNIS	-	007(359.6)	5.5	-	+1 700	-	34°53'38.8"N 126°23'00.8"E	-	RNP APCH	FAF
004	TF	RW010	Y	007(359.6)	5.1	-	+850	-	34°58'43.64"N 126°22'58.45"E	-3.00/50	RNP APCH	MAPt
005	TF	JB401	-	007(359.6)	4.5	-	-	-	35°03'13.1"N 126°22'56.4"E	-	RNP APCH	-
006	TF	GUPLA	Y	310(301.9)	8.3	-	-	-	35°07'37.8"N 126°14'18.1"E	-	RNP APCH	-
007	HM	GUPLA	Y	149(141.1)	-	R	@5 000	-230	35°07'37.8"N 126°14'18.1"E	-	RNP APCH	¹ MIN (Outbound timing)

HOLDING PROCEDURE

Holding Identification	Path Descriptor	Waypoint Identifier	Fly-over	Course/Track °M(°T)	Time (min)	Turn direction	Altitude (ft)	Speed (kt)	Coordinates	VPA/RDH	Navigation specification	Remarks
RNP RWY 01	HM	OVGEN	Y	045 (037.0)	1	L	@5 000	-230	34°46'22.2"N 126°11'47.9"E	-	RNAV 1	-

MUAN/Muan Intl(RKJB)
RNP RWY 01

FAS DATA BLOCK INFORMATION

INPUT DATA

Parameters	Values
Operation Type	0
SBAS Provider	6 (KASS)
Airport Identifier	RKJB
Runway	01
Runway Letter	0 (None)
Approach Performance Designator	0
Route Indicator	
Reference Path Data Selector	0
Reference Path Identifier	K01A
LTP/FTP Latitude	34°58'43.6370"N
LTP/FTP Longitude	126°22'58.4515"E
LTP/FTP Ellipsoidal Height (metres)	33.6
FPAP Latitude	35°00'14.4945"N
Delta FPAP Latitude (seconds)	90.8575
FPAP Longitude	126°22'57.8165"E
Delta FPAP Longitude (seconds)	-0.6350
Threshold Crossing Height (TCH)	50.0
TCH Units Selector	0 (Feet)
Glidepath Angle (GPA, degrees)	3.00
Course Width (metres)	105.00
Length Offset (metres)	0
Horizontal Alert Limit (HAL, meters)	40.0
Vertical Alert Limit (VAL, meters)	50.0

OUTPUT DATA

Data Block	60 02 0A 0B 12 01 00 00 01 31 30 0B 6A E2 02 0F 27 D7 3C 36 50 15 D3 C5 02 0A FB FF F4 01 2C 01 64 00 C8 FA F7 D9 C7 7B
Calculated CRC Value	F7D9C77B

Change : Establishment of FAS data block information.

INTENTIONALLY

LEFT

BLANK

**INSTRUMENT
APPROACH
CHART - ICAO**

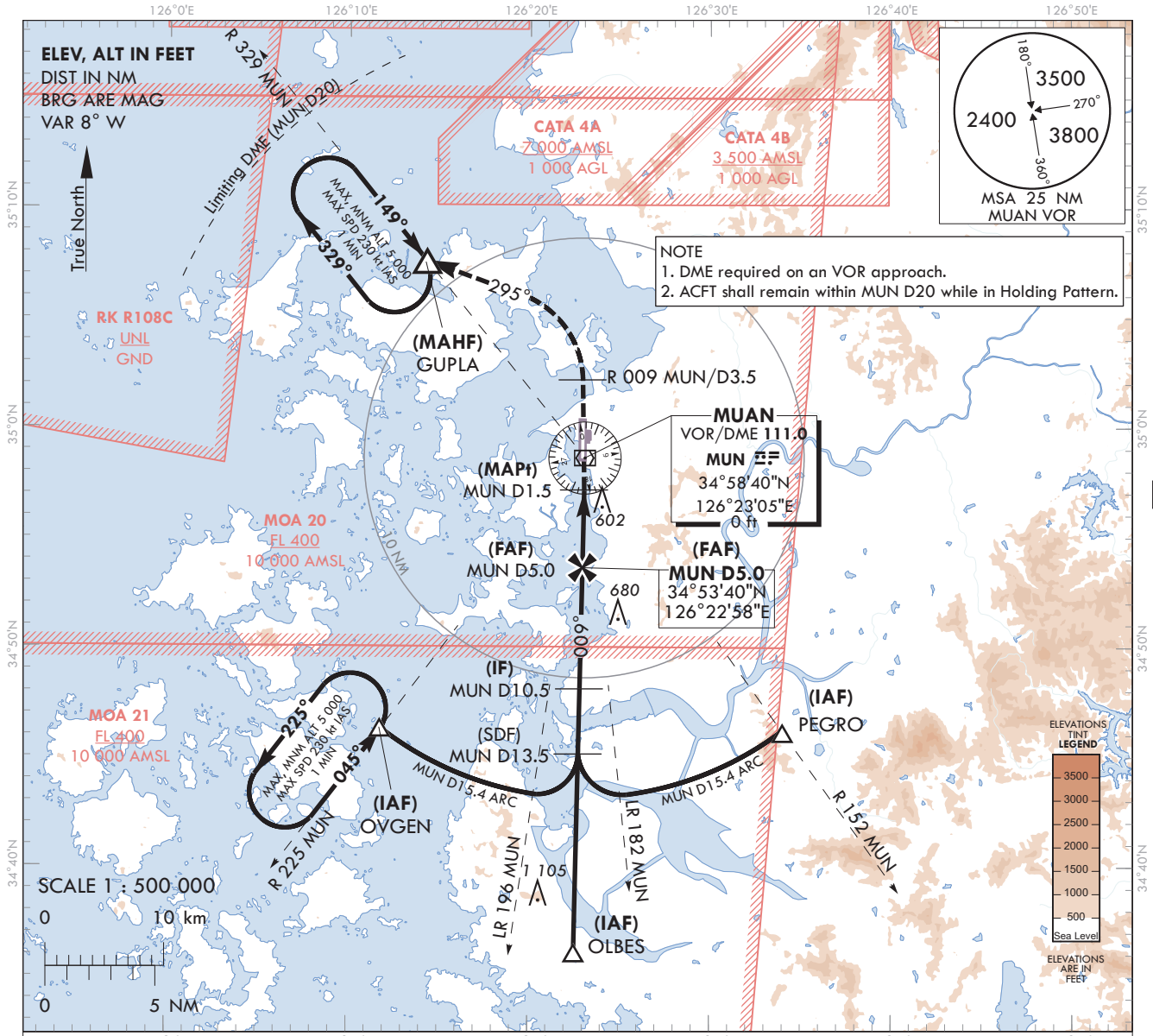
AERODROME ELEV 51 ft
HEIGHTS RELATED TO
THR RWY 01 - ELEV 32 ft

GWANGJU APP	120.475	130.0
	228.9	265.5
MUAN TWR	118.25	118.85

MUAN/Muan Intl(RKJB)

VOR RWY 01

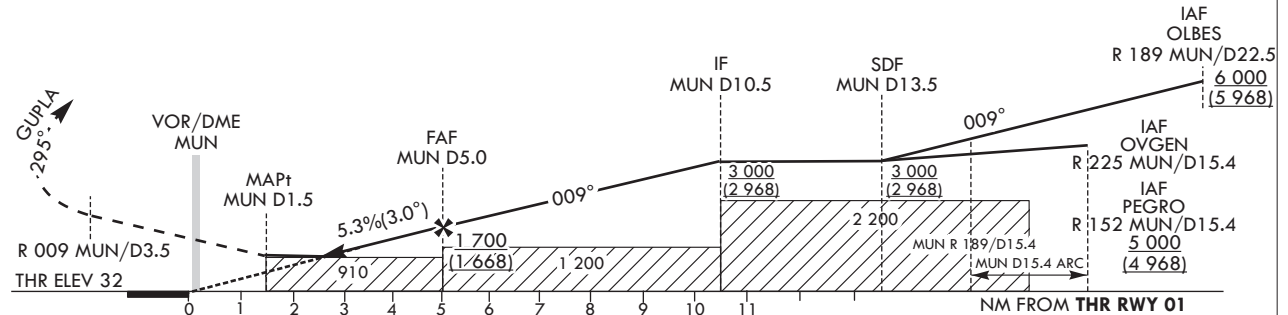
Note : Approach under ICAO Flight Procedures.



RECOMMENDED PROFILE	DME MUN	4	3	2.5
Final Approach Gradient 5.26%, 320 ft/NM	ALT(HGT)	1 381 (1 349)	1 061 (1 029)	910 (878)

MISSED APPROACH
Climb to R 009 MUN/D3.5, then turn left HDG 295° to GUPLA and Hold at 5 000 ft.

TRANSITION ALT 14 000
TRANSITION LVL FL 140



CATEGORY	MDA/(MDH)	A	B	C	D	Rate of descent					
						Knots	60	90	120	150	180
STA	FULL	910 (878)	3 300m			V/V	320	480	640	799	959
	ALS INOP		4 000m			* Circling Not authorized. * Timing Not authorized for defining MAPt.					

Change : Amended phrases(procedure → procedures, IMUN → MUN).

MUAN/Muan Intl(RKJB)
VOR RWY 01

AERONAUTICAL DATA TABULATION

VOR Approach to RWY 01 from OVGEN, OLBES or PEGRO			
Fix/point		Coordinates	
OVGEN(IAF)	R 225 MUN /15.4 NM MUN	34°46'22.2"N	126°11'47.9"E
OLBES(IAF)	R 189 MUN /22.5 NM MUN	34°36'08.1"N	126°22'32.0"E
PEGRO(IAF)	R 152 MUN /15.4 NM MUN	34°46'09.0"N	126°34'02.1"E
D13.5 MUN(SDF)	R 189 MUN/13.5 NM MUN	34°45'08.9"N	126°22'45.3"E
D10.5 MUN(IF)	R 189 MUN/10.5 NM MUN	34°48'09.1"N	126°22'49.8"E
D5.0 MUN(FAF)	R 189 MUN/5.0 NM MUN	34°53'39.6"N	126°22'57.9"E
D1.5 MUN(MAPt)	R 189 MUN/1.5 NM MUN	34°57'09.9"N	126°23'03.1"E
MUN VOR/DME		34°58'40.0"N	126°23'05.4"E
THR RWY 01	Final approach descent angle 3.01°	34°58'43.64"N	126°22'58.45"E
D3.5 MUN	R 009 MUN /3.5 NM MUN	35°02'10.2"N	126°22'57.2"E
GUPLA	HDG 294.81/11.5 NM MUN	35°07'37.8"N	126°14'18.1"E

**INSTRUMENT
APPROACH
CHART - ICAO**

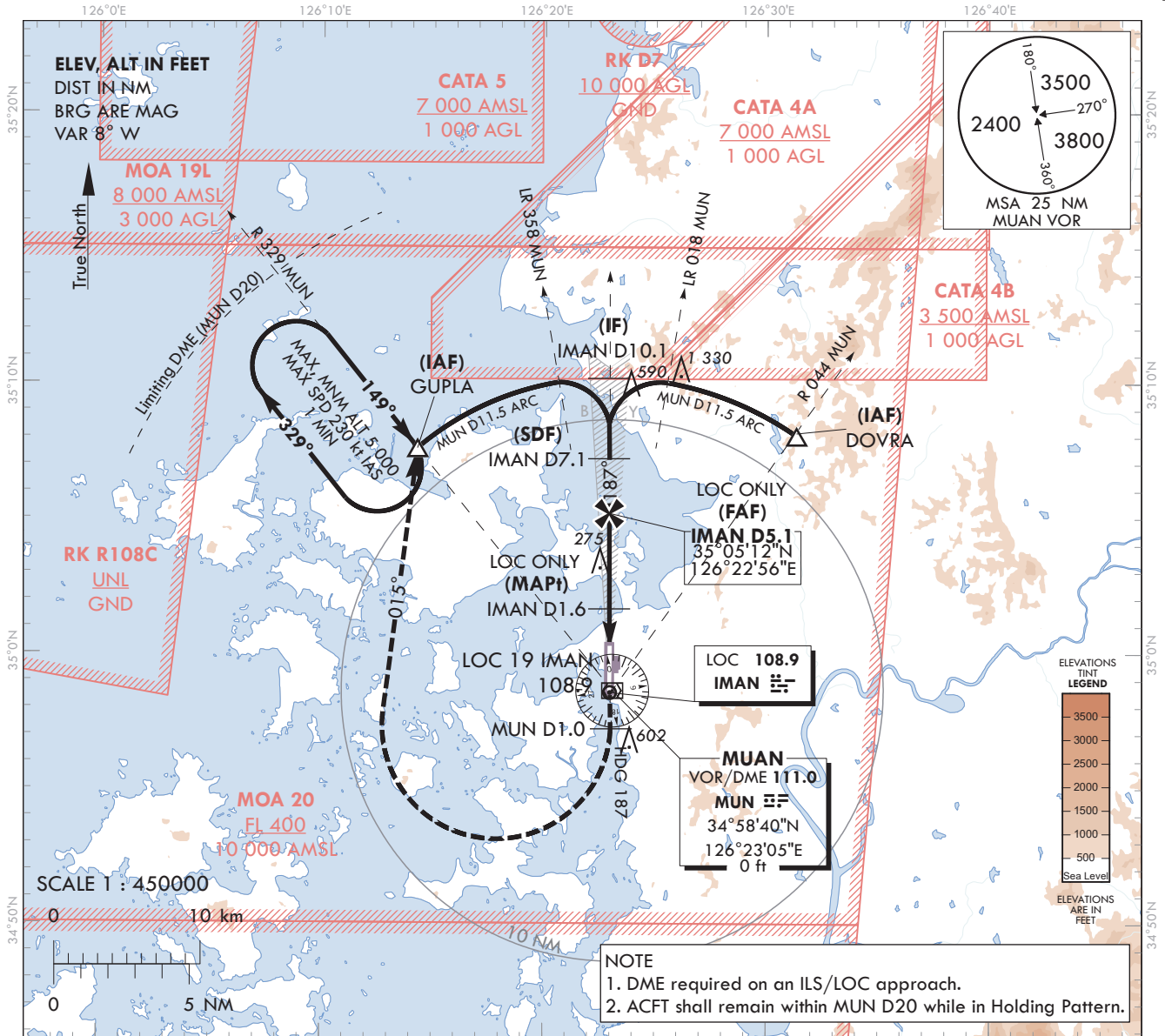
AERODROME ELEV 51 ft
HEIGHTS RELATED TO
THR RWY 19 - ELEV 51 ft

GWANGJU APP	120.475	130.0
	228.9	265.5
MUAN TWR	118.25	118.85

MUAN/Muan Intl(RKJB)

ILS Y or LOC Y RWY 19

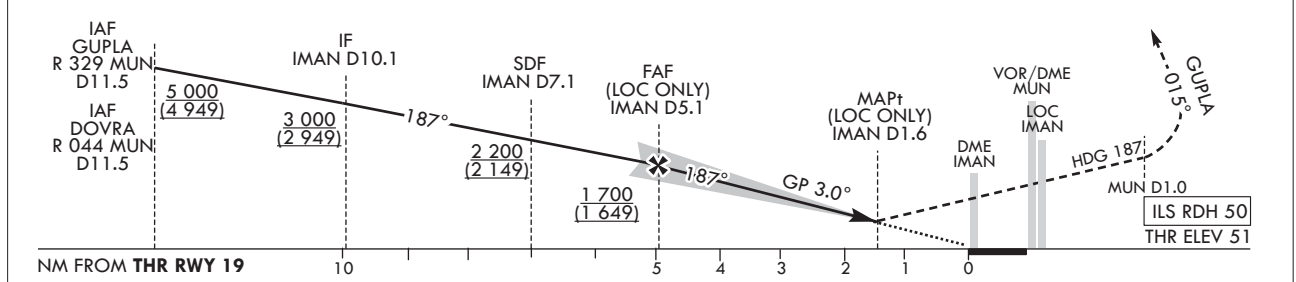
Note : Approach under ICAO Flight Procedures.



- NOTE**
1. DME required on an ILS/LOC approach.
 2. ACFT shall remain within MUN D20 while in Holding Pattern.

RECOMMENDED PROFILE(LOC ONLY)	DME IMAN	5	4	3	2	1.7	MISSED APPROACH Climb on HDG 187° to MUN D1.0 then turn right HDG 015° to GUPLA and Hold at 5 000 ft.
Final Approach Gradient 5.31%, 323 ft/NM	ALT (HGT)	1 660 (1 609)	1 338 (1 287)	1 015 (964)	692 (641)	590 (539)	

TRANSITION ALT 14 000
TRANSITION LVL FL 140



CATEGORY		DA(DH)/MDA(MDH)	A	B	C	D								
STA	CAT-I (CG 2.5%)	FULL	414 (363)		1 200 m		Rate of descent V/V fpm	Knots	60	90	120	150	180	
		ALS INOP		1 900 m										
	CAT-I (CG 5.0%)	FULL	251 (200)		RVR 550 m, VIS 800 m									* Timing Not authorized for defining MAPt. * Circling Not authorized.
		ALS INOP		1 200 m										
LOC	FULL	590 (539)		2 000 m										
	ALS INOP			2 700 m										

Change : Amended phrase(procedure → procedures).

MUAN/Muan Intl(RKJB)
ILS Y or LOC Y RWY 19

AERONAUTICAL DATA TABULATION

ILS Y or LOC Y Approach to RWY 19 from GUPLA or DOVRA			
Fix/point		Coordinates	
GUPLA(IAF)	R 329 MUN /11.5 NM MUN	35°07'37.8"N	126°14'18.1"E
DOVRA(IAF)	R 044 MUN /11.5 NM MUN	35°07'57.8"N	126°31'22.0"E
D10.1 IMAN(IF)	BRG 187.14°/10.14 NM IMAN	35°10'11.0"N	126°22'53.2"E
D7.1 IMAN(SDF)	BRG 187.14°/7.14 NM IMAN	35°07'13.4"N	126°22'54.7"E
D5.1 IMAN(FAF LOC ONLY)	BRG 187.14°/5.12 NM IMAN	35°05'12.3"N	126°22'55.7"E
D1.6 IMAN(MAPt LOC ONLY)	BRG 187.14°/1.60 NM IMAN	35°01'40.5"N	126°22'57.2"E
THR RWY 19	Final approach descent angle 3.04°(LOC ONLY)	35°00'14.49"N	126°22'57.82"E
IMAN DME		35°00'04.3"N	126°22'53.3"E
IMAN LOC		34°58'35.0"N	126°22'58.5"E
MUN VOR/DME		34°58'40.0"N	126°23'05.4"E
D1.0 MUN	HDG 187		-
GUPLA	HDG 015/11.5 NM MUN	35°07'37.8"N	126°14'18.1"E

**INSTRUMENT
APPROACH
CHART - ICAO**

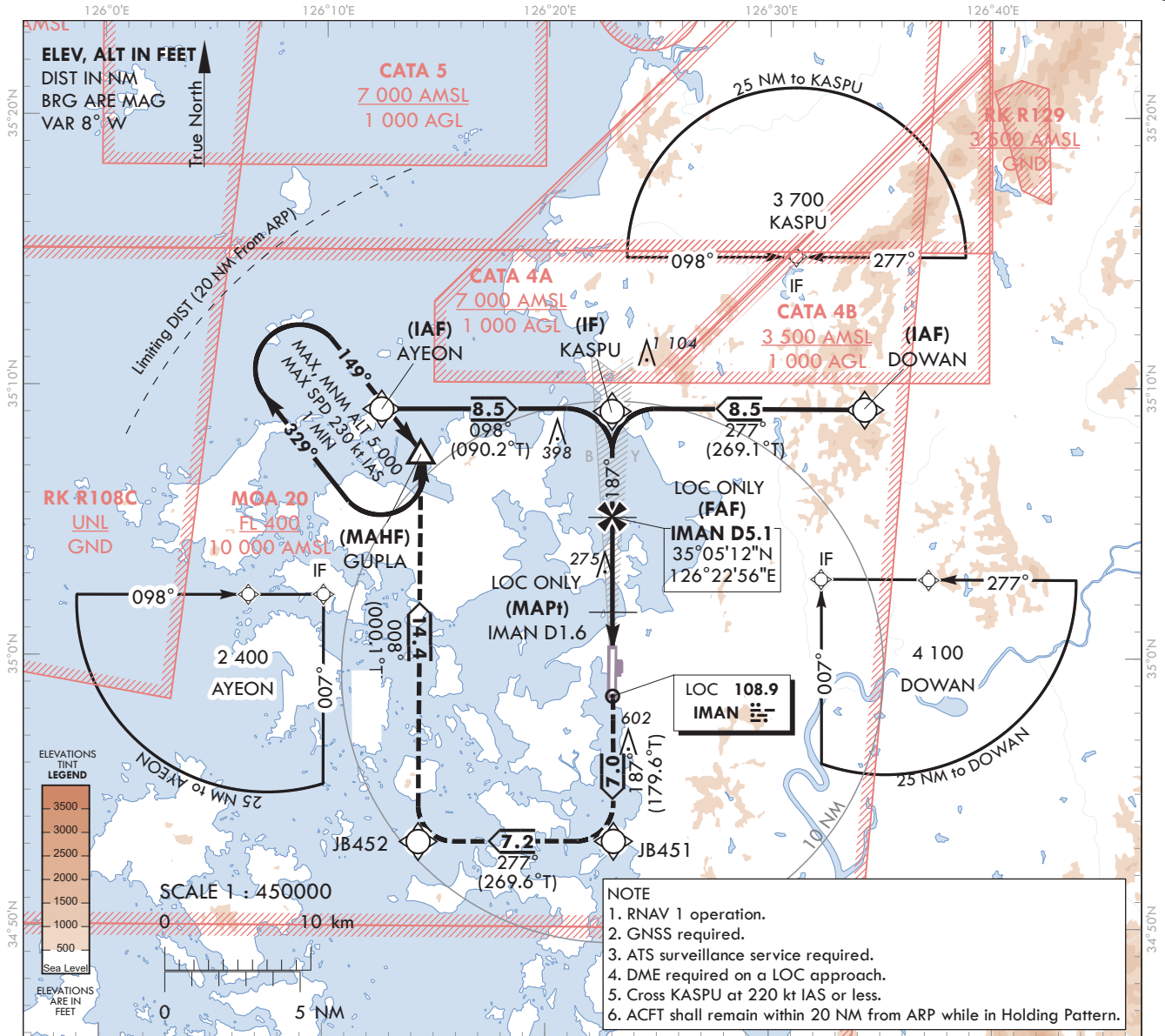
AERODROME ELEV 51 ft
HEIGHTS RELATED TO
THR RWY 19 - ELEV 51 ft

GWANGJU APP	120.475	130.0
	228.9	265.5
MUAN TWR	118.25	118.85

MUAN/Muan Intl(RKJB)

ILS Z or LOC Z RWY 19

Note : Approach under ICAO Flight Procedures.



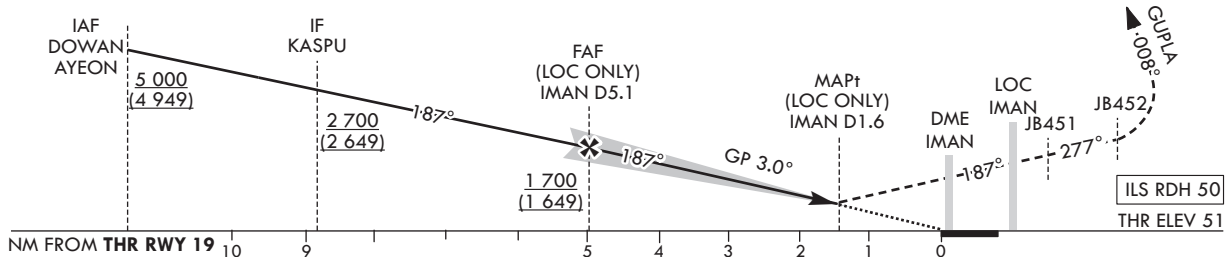
MISSED APPROACH

Climb to 5 000 ft on track of 187° to JB451, RIGHT turn on track of 277° to JB452, then RIGHT turn on track of 008° to GUPLA. Hold as published.

RECOMMENDED PROFILE(LOC ONLY)	DME IMAN	5	4	3	2	1.7
Final Approach Gradient 5.31%, 323 ft/NM	ALT(HGT)	1 660 (1 609)	1 338 (1 287)	1 015 (964)	692 (641)	590 (539)

* Missed approach turns are limited to maximum of 230 kt IAS.

TRANSITION ALT 14 000
TRANSITION LVL FL 140



CATEGORY	DA(DH)/MDA(MDH)	A	B	C	D	Rate of descent						
						Knots	60	90	120	150	180	
STA	CAT-I (CG 2.5%)	FULL	414	1 200 m			V/V fpm	318	478	637	796	955
		ALS INOP	(363)	1 900 m								
	CAT-I (CG 5.0%)	FULL	251	RVR 550 m, VIS 800 m								
		ALS INOP	(200)	1 200 m								
LOC	FULL	590	2 000 m			* Timing Not authorized for defining MAPt. * Circling Not authorized.						
	ALS INOP	(539)	2 700 m									

Change : Amended phrase(procedure → procedures).

MUAN/Muan Intl(RKJB)
ILS Z or LOC Z RWY 19

AERONAUTICAL DATA TABULATION

ILS Z or LOC Z Approach to RWY 19 from AYEON or DOWAN			
Fix/point		Coordinates	
AYEON(IAF)		35°09'10.2"N	126°12'32.1"E
DOWAN(IAF)		35°09'16.1"N	126°33'16.0"E
KASPU(IF)		35°09'07.5"N	126°22'54.1"E
D5.1 IMAN(FAF LOC ONLY)	BRG 187.14°/5.12 NM IMAN	35°05'12.3"N	126°22'55.7"E
D1.6 IMAN(MAPt LOC ONLY)	BRG 187.14°/1.60 NM IMAN	35°01'40.5"N	126°22'57.2"E
THR RWY 19	Final approach descent angle 3.04° (LOC ONLY)	35°00'14.49"N	126°22'57.82"E
IMAN DME		35°00'04.3"N	126°22'53.3"E
IMAN LOC		34°58'35.0"N	126°22'58.5"E
JB451		34°53'13.8"N	126°23'01.0"E
JB452		34°53'10.9"N	126°14'17.1"E
GUPLA		35°07'37.8"N	126°14'18.1"E

**INSTRUMENT
APPROACH
CHART - ICAO**

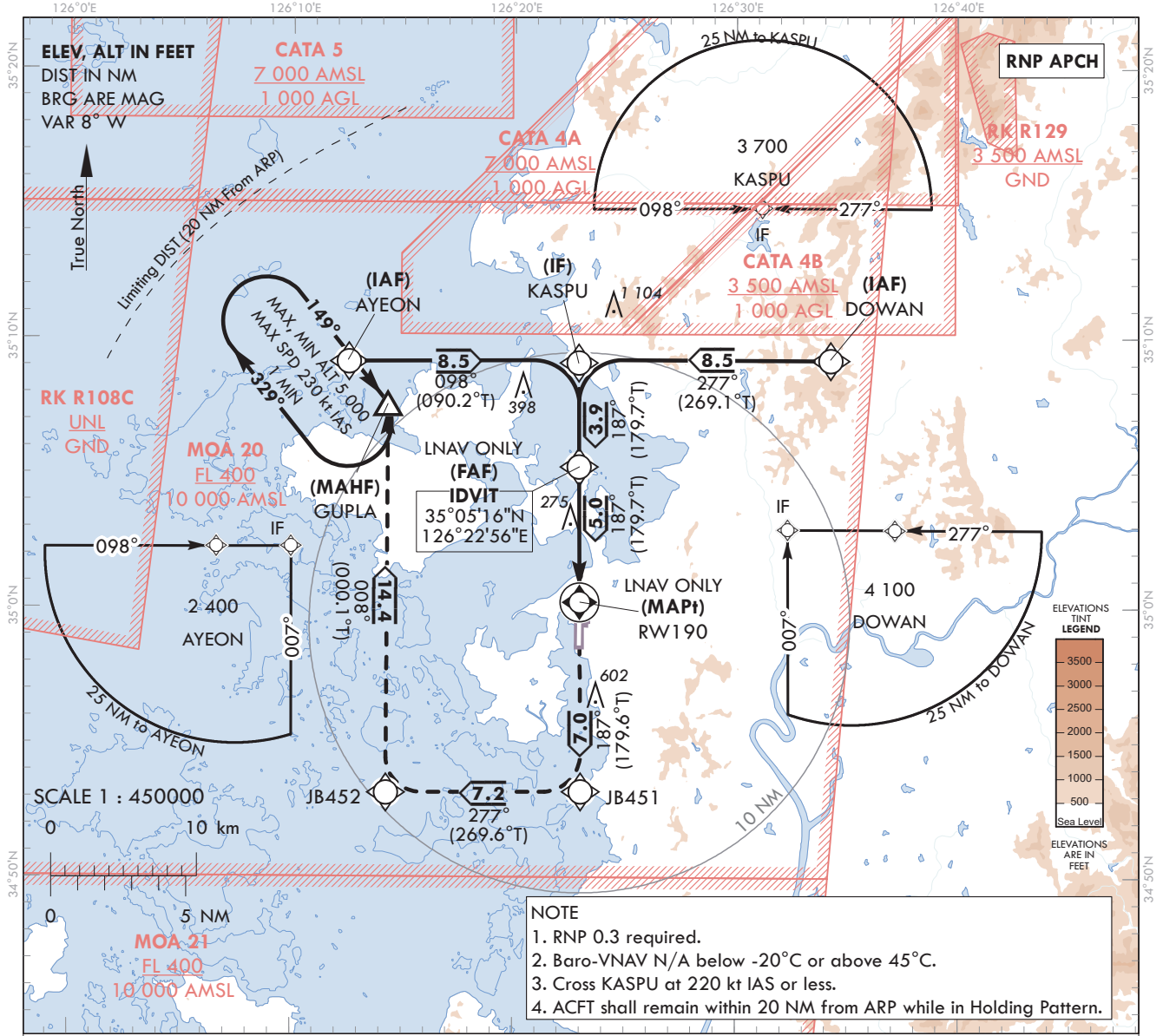
AERODROME ELEV 51 ft
HEIGHTS RELATED TO
THR RWY 19 - ELEV 51 ft

GWANGJU APP	120.475	130.0
	228.9	265.5
MUAN TWR	118.25	118.85

MUAN/Muan Intl(RKJB)

RNP RWY 19

Note : Approach under ICAO Flight Procedures.

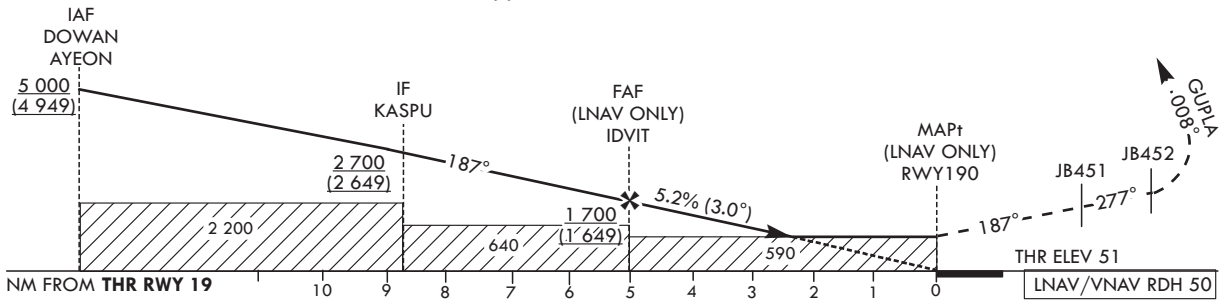


- NOTE**
1. RNP 0.3 required.
 2. Baro-VNAV N/A below -20°C or above 45°C.
 3. Cross KASPU at 220 kt IAS or less.
 4. ACFT shall remain within 20 NM from ARP while in Holding Pattern.

TRANSITION ALT 14 000
TRANSITION LVL FL 140

MISSED APPROACH

Climb to 5 000 ft on track of 187° to JB451, RIGHT turn on track of 277° to JB452, Then RIGHT turn on track of 008° to GUPLA.
Hold as published.
* Missed approach turns are limited to maximum of 230 kt IAS.



CATEGORY	DA(H)/MDA(H)	A	B	C	D	Rate of descent						
						Knots	60	90	120	150	180	
STA	LNAV/VNAV	FULL	460	1 200 m			V/V fpm	319	478	637	797	957
		ALS INOP	(409)	1 900 m								
	LNAV	FULL	590	1 700 m								
		ALS INOP	(539)	2 400 m								

* Timing Not authorized for defining MAPt.
* Circling Not authorized.

Change : Amended phrase(procedure → procedures).

AERONAUTICAL DATA TABULATION

Instrument Approach Procedure Coding Tables

RNP RWY 19 - via DOWAN to KASPU(IF)

Serial Number	Path Descriptor	Waypoint Identifier	Fly-over	Course/Track °M(T)	Distance (NM)	Turn direction	Altitude (ft)	Speed (kt)	Coordinates	VPA/RDH	Navigation specification	Remarks
001	IF	DOWAN	-	-	-	-	+5 000	-	35°09'16.1"N 126°33'16.0"E	-	RNP APCH	IAF
002	TF	KASPU	-	277(269.1)	8.5	-	+2 700	-220	35°09'07.5"N 126°22'54.1"E	-	RNP APCH	IF

RNP RWY 19 - via AYEON to KASPU(IF)

Serial Number	Path Descriptor	Waypoint Identifier	Fly-over	Course/Track °M(T)	Distance (NM)	Turn direction	Altitude (ft)	Speed (kt)	Coordinates	VPA/RDH	Navigation specification	Remarks
001	IF	AYEON	-	-	-	-	+5 000	-	35°09'10.2"N 126°12'32.1"E	-	RNP APCH	IAF
002	TF	KASPU	-	098(090.2)	8.5	-	+2 700	-220	35°09'07.5"N 126°22'54.1"E	-	RNP APCH	IF

RNP RWY 19 - via KASPU(IF) to GUPLA(MAHF)

Serial Number	Path Descriptor	Waypoint Identifier	Fly-over	Course/Track °M(T)	Distance (NM)	Turn direction	Altitude (ft)	Speed (kt)	Coordinates	VPA/RDH	Navigation specification	Remarks
002	TF	KASPU	-	-	-	-	+2 700	-220	35°09'07.5"N 126°22'54.1"E	-	RNP APCH	IF
003	TF	IDVIT	-	187(179.7)	3.9	-	+1 700	-	35°05'15.9"N 126°22'55.7"E	-	RNP APCH	FAF
004	TF	RW190	Y	187(179.7)	5.0	-	+590	-	35°00'14.49"N 126°22'57.82"E	-3.00/50	RNP APCH	MAPt
005	TF	JB451	-	187(179.6)	7.0	-	-	-230	34°53'13.8"N 126°23'01.0"E	-	RNP APCH	-
006	TF	JB452	-	277(269.6)	7.2	-	-	-230	34°53'10.9"N 126°14'17.1"E	-	RNP APCH	-
007	TF	GUPLA	Y	008(000.1)	14.4	-	-	-230	35°07'37.8"N 126°14'18.1"E	-	RNP APCH	-
008	HM	GUPLA	Y	149(141.1)	-	R	@5 000	-230	35°07'37.8"N 126°14'18.1"E	-	RNP APCH	¹ MIN (Outbound timing)

**INSTRUMENT
APPROACH
CHART - ICAO**

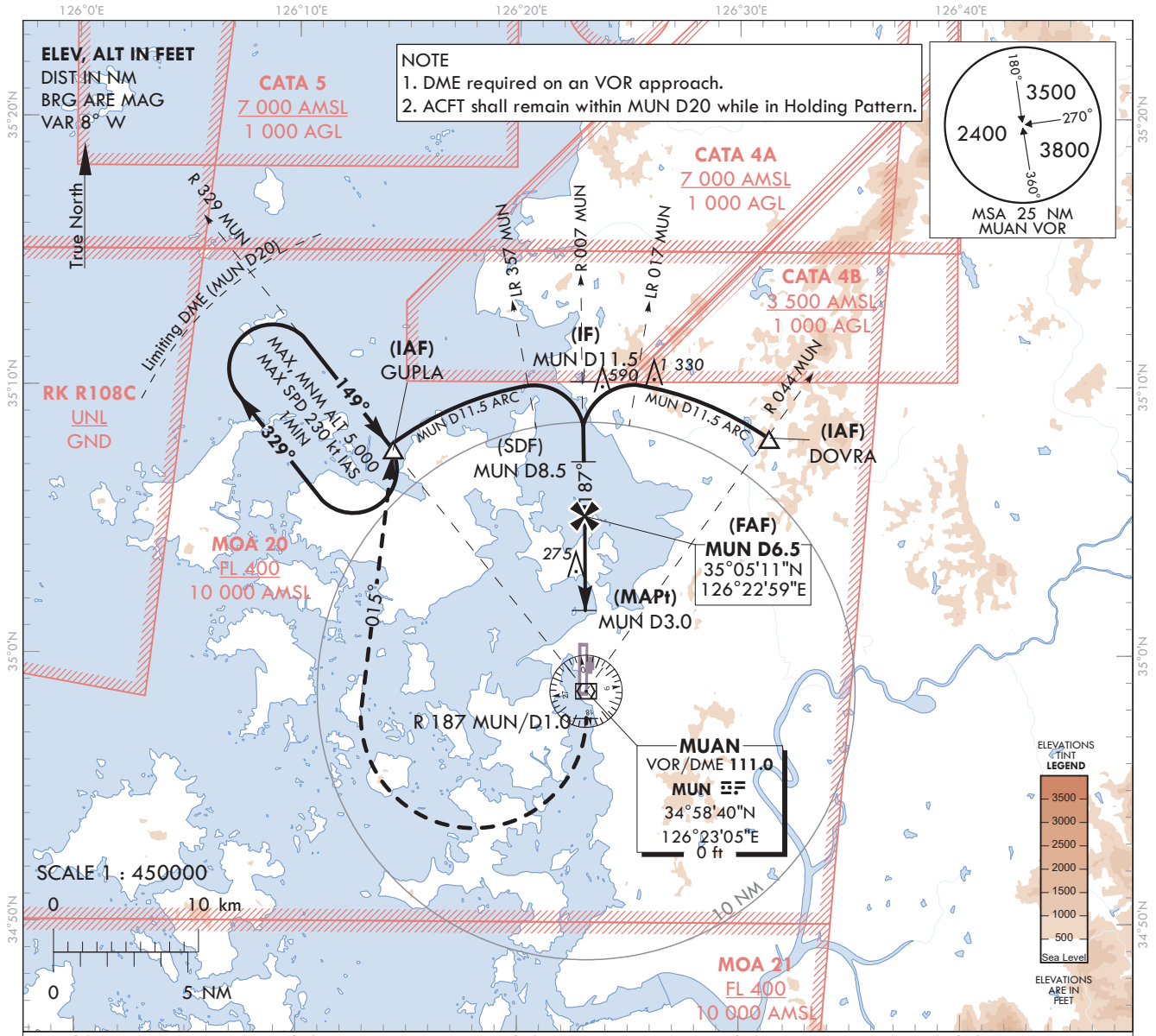
AERODROME ELEV 51 ft
HEIGHTS RELATED TO AD ELEV

GWANGJU APP	120.475	130.0
	228.9	265.5
MUAN TWR	118.25	118.85

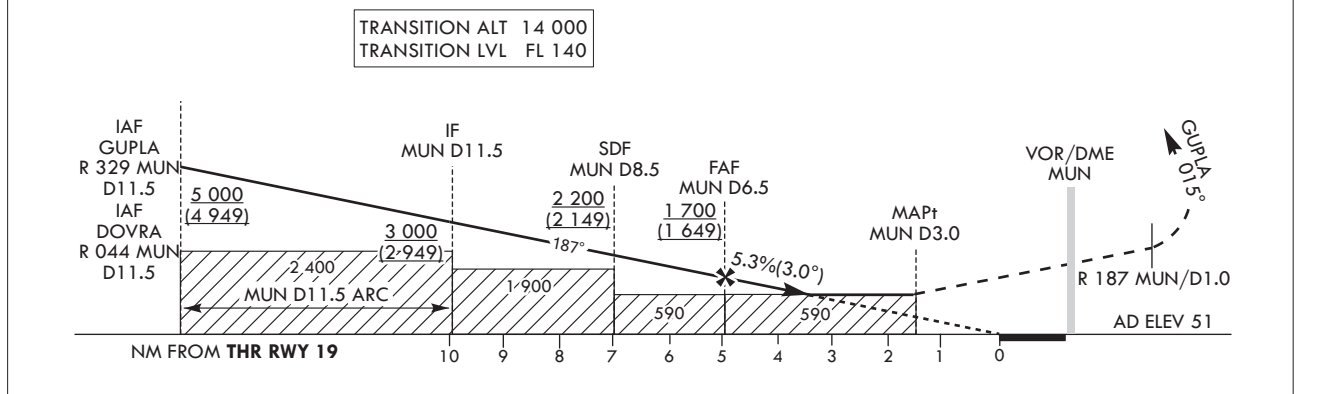
MUAN/Muan Intl(RKJB)

VOR RWY 19

Note : Approach under ICAO Flight Procedures.



RECOMMENDED PROFILE	DME MUN	6	5	4	3.1	MISSED APPROACH Climb on R 187 MUN/D1.0, then turn right HDG 015° to GUPLA and Hold at 5 000 ft.
Final Approach Gradient 5.35%, 325 ft/NM	ALT(HGT)	1 538 (1 487)	1 214 (1 163)	889 (838)	590 (539)	



CATEGORY	MDA/(MDH)	Knots				Rate of descent V/V fpm
		A	B	C	D	
FULL	590		2 100 m			325
ALS INOP	(539)		2 800 m			487
						649
						811
						974

* Circling Not authorized.
* Timing Not authorized for defining the MAPt.

Change : Amended phrase(procedure → procedures).

MUAN/Muan Intl(RKJB)
VOR RWY 19

AERONAUTICAL DATA TABULATION

VOR Approach to RWY 19 from GUPLA or DOVRA			
Fix/point		Coordinates	
GUPLA(IAF)	R 329 MUN /11.5 NM MUN	35°07'37.8"N	126°14'18.1"E
DOVRA(IAF)	R 044 MUN /11.5 NM MUN	35°07'57.8"N	126°31'22.0"E
D11.5 MUN(IF)	R 007 MUN/11.5 NM MUN	35°10'11.0"N	126°22'53.2"E
D8.5 MUN(SDF)	R 007 MUN/8.5 NM MUN	35°07'13.6"N	126°22'56.3"E
D6.5 MUN(FAF)	R 007 MUN/6.5 NM MUN	35°05'10.6"N	126°22'59.5"E
D3.0 MUN(MAPt)	R 007 MUN/3.0 NM MUN	35°01'40.2"N	126°23'02.2"E
THR RWY 19	Final approach descent angle 3.06°	35°00'14.49"N	126°22'57.82"E
MUN VOR/DME		34°58'40.0"N	126°23'05.4"E
D1.0 MUN	R 187 MUN /1.0 NM MUN	34°57'39.9"N	126°23'06.3"E
GUPLA	HDG 014.75/11.5 NM MUN	35°07'37.8"N	126°14'18.1"E